

French
English

Spanish
German

ELEANOR PALMER PRIMARY SCHOOL WEEKLY NEWSLETTER SPRING TERM 2021

www.eleanorpalmer.camden.sch.uk

Thursday 18th March 2021

I looked back at my newsletter for this week last year. I was talking about the children bringing in their own water bottle, letting you know we had employed an extra mid-day cleaner and awaiting direction from the government. What a year.

The 19th EP Great Egg Race - Thursday 1st April. The last day of term.

We will end this term with our traditional celebration of the children's wit, creativity and inventiveness: the Great EP Egg Race. This will be extra special as it will be my last and it is something I've introduced in all my schools. - long may it continue @EPI! We had great fun in assembly imagining all the Covid puns (masks on eggs, 5pm briefings to the nation) - and April Fool twists that could take place. We know it will be an EP classic and a much-needed laugh about the last year. Humour is so important in building resilience!

We will have to run it throughout the day in smaller groups. I'm hugely sad we can't have parents in to watch. We considered outdoors but the friction of the tarmac is just too difficult. We are trying to find a way to allow you to see the vehicles even if not watch the race.

The all-important rules are attached. We stick to these to the letter and that is half the fun so if in any doubt, check with a teacher to avoid being disqualified. Susie and Sophie will explain it all to new families - and Year 4 to Mr P!

Thank you

To Aurelie Barnett in Year 5 for this week's newsletter border.

Term dates 21-22 are attached.

This year Summer Term ends on Wednesday 21st July. This date has been fixed for some time.

Dates for the next academic year are attached and are on our website.



Maths

English

Science

PE

Art

Music

PSHE

RE

History

Geography

Design

Computing

Physical Education

Art

Music

PSHE

RE

History

Geography

Design

Computing

Physical Education

Art

French
English

LEP!

Spanish
German

Year 1



Ancient Egypt

Year 2



Greeks

Year 3



Victorians

Year 4



Romans

Year 5



Tudors

Year 6



World War 2

Summer Term dates

A reminder that the last day of this term is Thursday 1st April.

And then, a reminder of next term's dates, predicated on the England roadmap proceeding to plan. Isn't this tantalizing!

Thursday 29th April - UKMT Maths Challenge

Monday 17th - Friday 21st May - Year 5 residential at Sayers Croft!

Tuesday 18th - Friday 21st May - Year 6 residential at East Soar Campsite in Devon

HALF TERM Monday 31st May - Friday 4th June

Wednesday 9th June - school photographer (missed last year!)

Monday 7th June - INSET DAY (school closed)

Monday 14th June - INSET DAY (school closed)

Wednesday June 23rd - Summer Concert

Thursday 24th - Friday 25th June - Year 2 adventure to the Mill in Surrey

We are trying to fix Year 4 camping too for late June

Saturday 3rd July - Summer Fair

Tuesday 6th July - Sports Day

Wednesday 7th and Thursday 8th July - end of year Parents' Evening

Thursday 15th July - Year 6 Leavers Show

Friday 16th July - Year 6 BBQ

Last day of Summer Term - Wednesday 21st July @ 1.30pm

A final shout out to complete our short feedback survey - thanks to all those who have commented to date.

<https://www.smartsurvey.co.uk/s/EPLockdown2/>

It is less about remote learning and more about the positives and negatives of lockdown for you as a family. We always gain so much from your feedback - our improved remote offer this time for example - so we value your thoughts as we plan forward. Thank you.

With best wishes,
Kate Froud and staff



GO AWAY COVI



Maths

English

Science

PE

C

S

Sh

ar

es

1

2

3

4

5

6

7

8

9

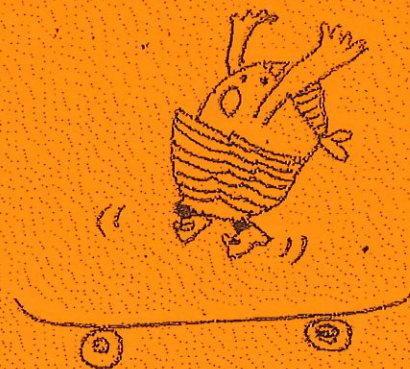
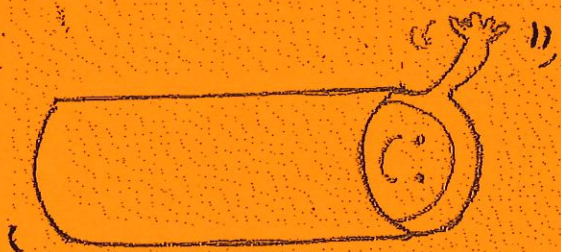
0

+

-

x

=



RULES OF THE GREAT EGG RACE

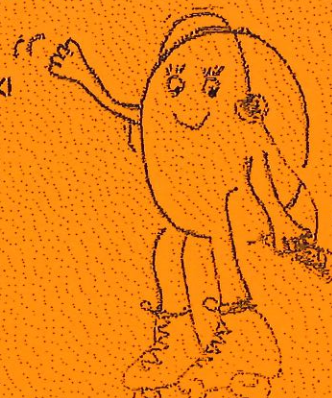
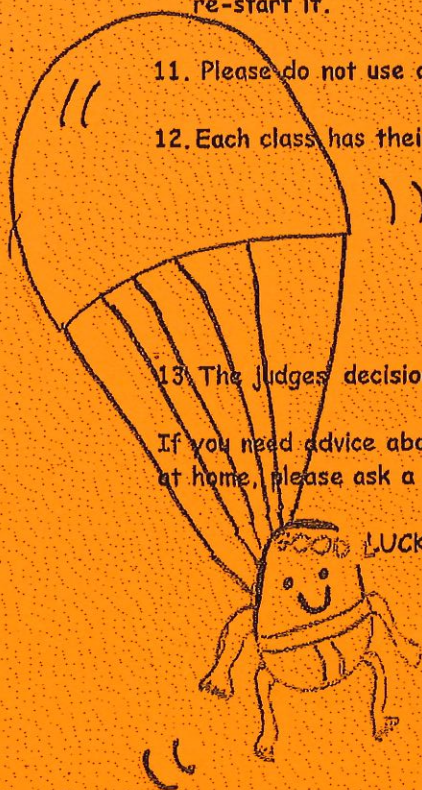
1. The egg-mobile must carry a chicken's egg.
2. The egg must be hard boiled.
3. The egg-mobile is to be designed and built out of school.
4. As far as possible, the egg-mobile must be made without help from grown ups.
5. You may work on your own, in a pair, group or family, but the egg-mobile may only be entered for one class race.
6. Each egg-mobile will have an independent run on the course.
7. No mains electricity may be used to power or move your egg mobile.
8. Batteries are allowed.
9. No living creature may be used as an egg-mobile.
10. If the egg-mobile uses its own source of power, it will be released from a slope. If it uses another source of power e.g. air, battery, it will start from a flat surface.
11. Once your egg mobile leaves the start, you may not push it, pull it, control it or re-start it.
11. Please do not use any glass in your design.
12. Each class has their own race. There are 4 winning categories for each class :

- The most beautifully decorated
- The most original design
- The greatest distance travelled
- The wittiest

13. The Judges decision is final.

If you need advice about your egg-mobile or a piece of equipment that you don't have at home, please ask a teacher.

GOOD LUCK! GOOD LUCK! GOOD LUCK! GOOD LUCK! GOOD LUCK!



Eleanor Palmer Primary School

Term dates 2020-21

Autumn Term 2020	
Term starts for children:	Thursday 3 September 2020 (Tuesday 1 and Wednesday 2 September staff INSET days)
Half Term:	Monday 26 October 2020 – Friday 30 October 2020
Term ends:	Friday 18 December 2020
Christmas Holidays:	Monday 21 December 2020 to Monday 4 January 2021
Spring Term 2021	
Term starts for children:	Tuesday 5 January Plus INSET day Friday 5 Feb
Half Term:	Monday 15 February to Friday 19 February 2021
Term ends:	Thursday 1 April 2021 (Good Friday Friday 2)
Easter/Spring Holidays	Monday 5 April to Friday 16 April 2021 (Easter Monday 5 April)
Summer Term 2021	
Term starts for staff and children:	Monday 19 April 2021
Half Term:	Monday 31 May to Friday 4 June (plus Monday 7 June and Monday 14 June–staff INSET days)
Term ends:	Wednesday 21 July at 1.30pm
Additional Bank Holiday closure	May Day Monday 3 May 2021

